



ID1 Polyclonal Antibody

Catalog No	YP-Ab-04970
Isotype	IgG
Reactivity	Human;Mouse;Rat
Applications	WB;ELISA
Gene Name	ID1 BHLHB24 ID
Protein Name	DNA-binding protein inhibitor ID-1 (Class B basic helix-loop-helix protein 24) (bHLHb24) (Inhibitor of DNA binding 1)
Immunogen	Synthesized peptide derived from human protein . at AA range: 30-110
Specificity	ID1 Polyclonal Antibody detects endogenous levels of protein.
Formulation	Liquid in PBS containing 50% glycerol, and 0.02% sodium azide.
Source	Polyclonal, Rabbit,IgG
Purification	The antibody was affinity-purified from rabbit antiserum by affinity-chromatography using epitope-specific immunogen.
Dilution	WB 1:500-2000 ELISA 1:5000-20000
Concentration	1 mg/ml
Purity	≥90%
Storage Stability	-20°C/1 year
Synonyms	
Observed Band	17kD
Cell Pathway	Cytoplasm . Nucleus.
Tissue Specificity	Lung,Ovary,Placenta,Skin,
Function	alternative products:Additional isoforms seem to exist,developmental stage:Expression correlates with proliferation in some types of cells.,function:ID (inhibitor of DNA binding) HLH proteins lack a basic DNA-binding domain but are able to form heterodimers with other HLH proteins, thereby inhibiting DNA binding.,similarity:Contains 1 basic helix-loop-helix (bHLH) domain.,subunit:Heterodimer with other HLH proteins. Interacts with COPS5.,
Background	The protein encoded by this gene is a helix-loop-helix (HLH) protein that can form heterodimers with members of the basic HLH family of transcription factors. The encoded protein has no DNA binding activity and therefore can inhibit the DNA binding and transcriptional activation ability of basic HLH proteins with which it interacts. This protein may play a role in cell growth, senescence, and differentiation. Two transcript variants encoding different isoforms have been found for this gene. [provided by RefSeq, Jul 2008],



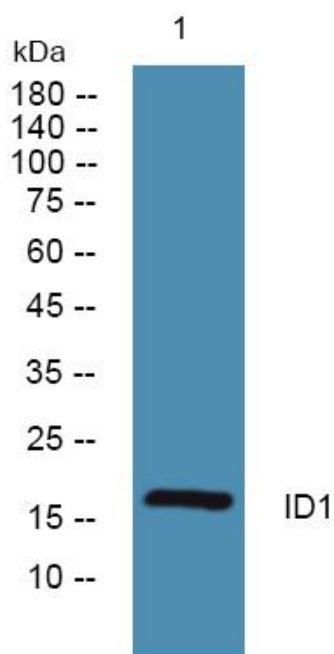
matters needing attention

Avoid repeated freezing and thawing!

Usage suggestions

This product can be used in immunological reaction related experiments. For more information, please consult technical personnel.

Products Images



Western blot analysis of lysates from Jarkat cells, primary antibody was diluted at 1:1000, 4° over night